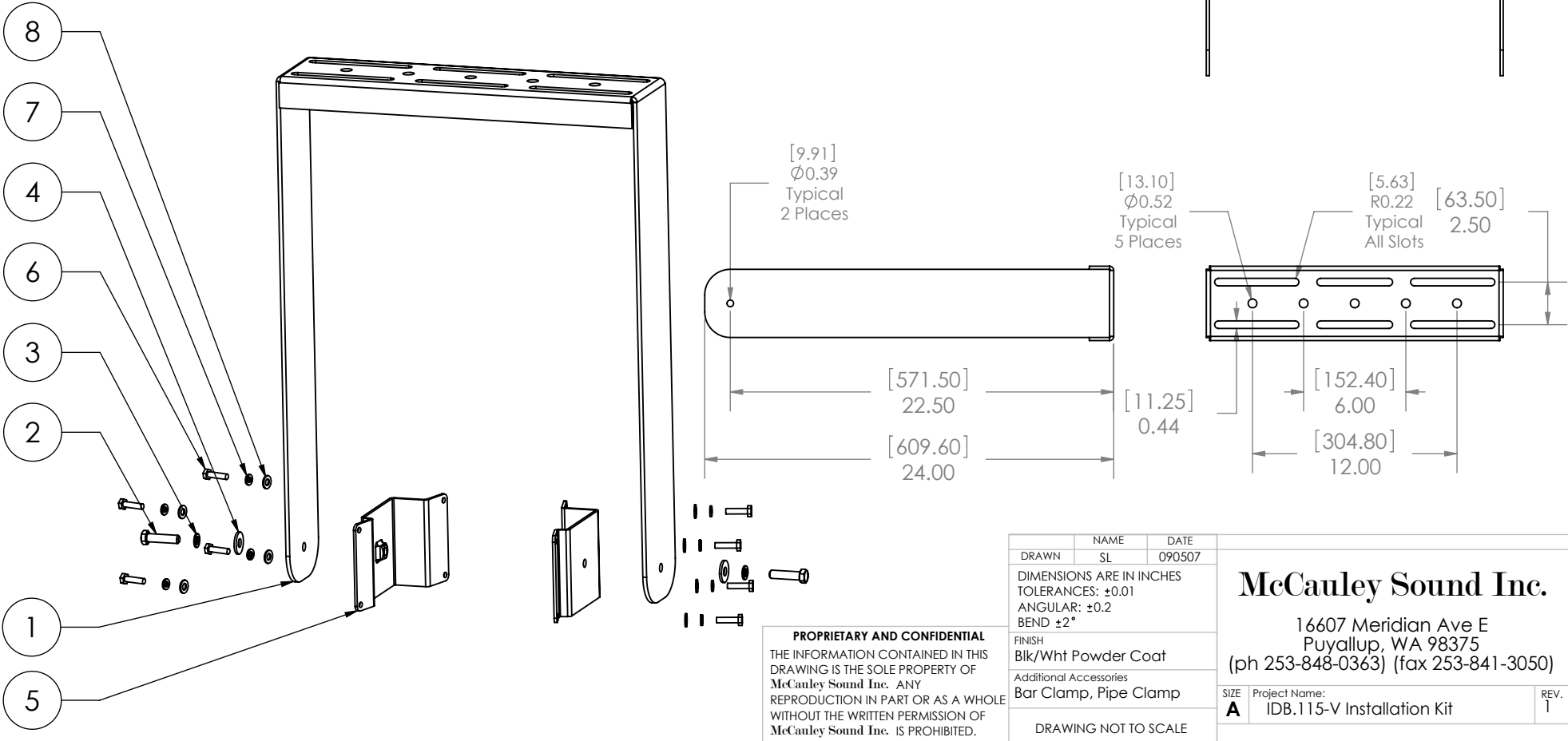
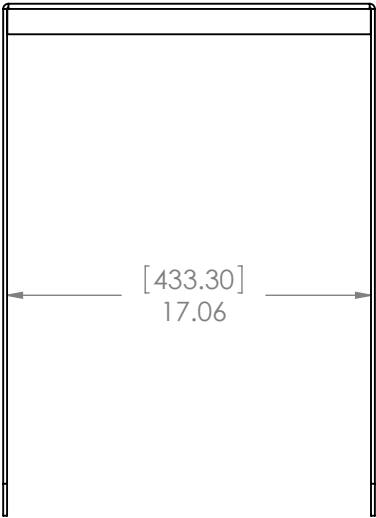


ITEM NO.	PART NUMBER	QTY.
1	901-2029	1
2	3-8-16 X 1500 Grade 8 Hex Hd Cap Screw Yellow Zinc	2
3	3-8 Lock Washer PFC9 Yellow Zinc	2
4	3-8 Flat Washer PFC9 Yellow Zinc	2
5	901-9001	2
6	0420 x 1000 Grade 8 Hex Cap Screw Yellow Zinc	8
7	1-4 Lock Washer Zinc	8
8	1-4 Flat Washer Structural Steel F436 Yellow Zinc	8

REVISIONS		DATE	APPROVED
ZONE	REV.		



**PROPRIETARY AND CONFIDENTIAL**  
 THE INFORMATION CONTAINED IN THIS  
 DRAWING IS THE SOLE PROPERTY OF  
 McCauley Sound Inc. ANY  
 REPRODUCTION IN PART OR AS A WHOLE  
 WITHOUT THE WRITTEN PERMISSION OF  
 McCauley Sound Inc. IS PROHIBITED.

NAME	DATE
SL	090507
DIMENSIONS ARE IN INCHES	
TOLERANCES: ±0.01	
ANGULAR: ±0.2	
BEND ±2°	
FINISH	
Blk/Wht Powder Coat	
Additional Accessories	
Bar Clamp, Pipe Clamp	
DRAWING NOT TO SCALE	

**McCauley Sound Inc.**

16607 Meridian Ave E  
 Puyallup, WA 98375  
 (ph 253-848-0363) (fax 253-841-3050)

SIZE	Project Name:	REV.
A	IDB.115-V Installation Kit	1